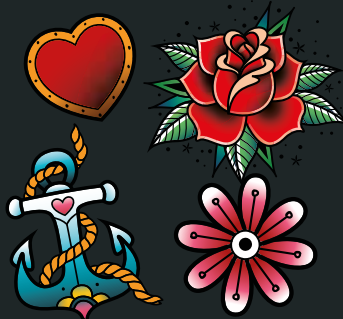


8th June INKED! Art for Tattoo Needles

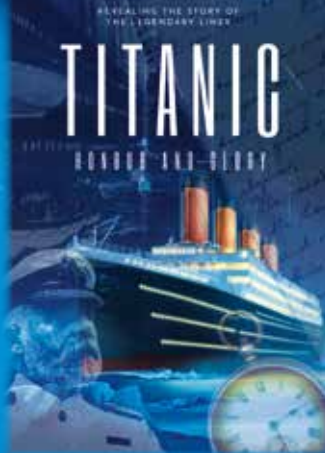


**14th &
15th June**
**Step Back
in Time**



19th July - 30th August Titanic: Honour and Glory

This special exhibition contains rare artefacts from the Titanic and her sister ships, Britannic and Olympic. Discover more about the allure of Titanic through original ephemera and the personal stories of those on board.



31st August 'The Big Bad Wolf' Outdoor Theatre



3rd September - 19th October Arranging Nature An exhibition by Hilary Beattie

Well known textile artist Hilary Beattie is back with an exhibition drawing upon her love for the natural world. She aims to inspire you to notice all the wonderful, varied form and motifs, amongst nature's enduring beauty.

21st September Heritage Day



22nd October - 23rd November Creative Approaches An exhibition by Oddfellows Art

Nine artists, each with their own specialism - including pottery, textiles, printing and painting collaborate to bring together an exhibition celebrating the natural world.

30th Nov & 7th Dec Christmas Craft Fair



OPENING TIMES FOR MUSEUM, SHOP & VISITOR CENTRE

1 FEB TO 28 FEB Every day: 10am - 3pm
(Inc. Coffee Bar & Grounds)

1 MARCH TO 2 NOV Every day: 10am - 4pm
Coffee Bar & Grounds: 10am - 4.30pm

3 NOV TO 24 NOV Every day: 10am - 3pm
(Inc. Coffee Bar & Grounds)

Last admission 30 minutes before closing time.
MUSEUM CLOSED FROM 24 NOVEMBER.
REOPENS 1 FEBRUARY 2026.

ADMISSION RATES

ADULTS: £6.95
CHILDREN: £2.25
FAMILY TICKET: £16

**Textile
Connoisseurs
Club Pass £14**
see website for info

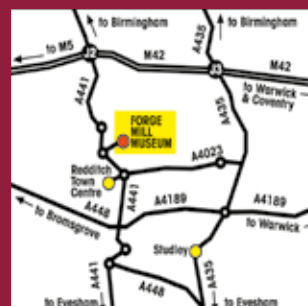
FACILITIES

The museum has ample parking, toilets, a shop, large play area & picnic tables throughout the grounds. Bicycle stands are available at the visitor centre. Only registered assistance dogs are allowed inside the museum.

- Guided tours of the mill every Tuesday, April - Sept at 11am.
- Venue hire available for weddings & private parties.

DISABLED FACILITIES

The museum has designated car parking, toilet, & manual wheelchair available. Guides in Braille & large type on request. An interactive guide is available for the top floor displays.



CONTACT US

**FORGE MILL & BORDESLEY
ABBEY VISITOR CENTRE**
Needle Mill Lane, Riverside,
Redditch, B98 8HY

01527 62509
www.forgemill.org.uk
info@forgemill.org.uk

Forge Mill 2025



Needle Museum & Bordesley Abbey Visitor Centre

- Specialist textile centre
- Historical buildings & excavations
- National collections
- Exhibitions & events
- Activities & fun days
- Children's play area

forgemill.org.uk
01527 62509



FORGE MILL

Tells the fascinating & sometimes gruesome story of needle making in Victorian times. The Mill is a listed building which houses original water-powered machinery. Models & recreated scenes provide a vivid illustration of how needles were once made & how Redditch came to dominate the world needle trade. The museum was opened by the Queen in 1983.

Step back in time & experience the atmosphere of a Victorian needle polishing mill. The scouring mill is the only one of its kind remaining in the world.

CONTEMPORARY TEXTILES

To celebrate our association with needles, Forge Mill regularly hosts textile exhibitions. Please see our website for more details.

PLAY AREA

Our play area has been refurbished for our younger visitors with new play equipment surrounding our extensive sand pit.

ENJOY LIGHT REFRESHMENTS AT THE

Mill View COFFEE BAR

Which serves a range of hot drinks, including specialist coffees.

These can be accompanied by a selection of light refreshments from teacakes to toasties & delicious, locally made homemade cakes.



BORDESLEY ABBEY



Just a short walk from the Mill are the Medieval ruins of Bordesley Abbey, once a thriving Cistercian Abbey. The site has been extensively excavated & many of the archaeological finds can now be seen in the Visitor Centre in which the story of the Abbey is told; from its early development to its destruction in the 16th Century by Henry VIII, during the Dissolution.



EVENTS & EXHIBITIONS

1st February - 16th March

Hidden

An exhibition by the Contemporary Quilt Group of the Quilters' Guild of the British Isles



Challenged to create 12 small journal quilts (one each month) including a 3D piece. The resulting work shows pieces that are technically complex and some others are deceptively simple; some showcase the design element, others have deeper stories to tell.

19th March - 27th April



Expressions

An exhibition by Bernice Hopper and Becca Birtles

These two textile artists come

together to explore the themes of captivity, freedom and identity, disability and communication in an exhibition that goes beyond the traditions of textile art.

12th - 20th April

Easter Egg Trail



30th April - 1st June

Mixing it up

An exhibition by Eclectica

The textile group are back at Forge Mill with a vibrant new exhibition which showcases their diverse approaches to contemporary textiles. Expect the unexpected!



1940s WEEKEND

10th & 11th May

25th May Farm Day



4th June - 13th July

Curiosity

By The '98 Lace Group



Inspired by the work of Charles Rennie Mackintosh, this exhibition aims to challenge the traditional view of lacemaking by giving it a contemporary twist.